



At the Arboretum

EXHIBITION,
SALE & GALA
2016

Saturday, September 24, 2016 at 7p.m.

Knippenberg Center for Education
Laurelwood Arboretum
725 Pines Lake Drive West, Wayne, New Jersey

WELCOME



*What could be said about me—a man to whom only his painting matters?
And of course his garden and his flowers as well.*

— Claude Monet

This weekend we bring together both things beloved by Monet—gardens and art. *Art at the Arboretum* is an opportunity to discover the work of distinguished artists in the setting of beautiful Laurelwood Arboretum. This is the first major fundraising event for Friends of Laurelwood Arboretum. The money we raise will help us continue to maintain and enhance our beloved park and host a full menu of programs and activities for nature lovers of all ages.

Thank you to everyone who has worked so hard to make *Art at the Arboretum* a success—Chairpersons Leslie and Stuart Reiser, the Art Gala Committee, the Board of Directors of Friends of Laurelwood Arboretum, and our ever-supportive Mayor Christopher Vergano. Thank you, too, to all the financial supporters of this event and the advertisers in this journal whose contributions are so essential to our ongoing efforts. Here's to art and gardens—perfect together!

Alice Moskowitz

President, Friends of Laurelwood Arboretum

FRIENDS OF LAURELWOOD ARBORETUM

Friends of Laurelwood Arboretum was created by a group of Dorothy Knippenberg's friends who wanted to ensure that the arboretum would be preserved as a natural oasis as it transitioned to a Wayne Township public park. Gradually, this dedicated group began to collect donations and build membership. In 2003, Friends of Laurelwood Arboretum (FOLA) was incorporated as a 501(c)(3) nonprofit organization. When Dorothy died in 2006, the organization assumed responsibility for management of the arboretum, in accordance with an agreement with Wayne Township.

Today, FOLA is an all-volunteer nonprofit organization whose mission is to preserve, promote and improve the arboretum and provide opportunities for horticultural appreciation and education through public programs and outreach activities. Membership has grown to more than 350. The organization is funded by membership dues, plant sales and donations from individuals and businesses.

The FOLA Board of Directors and Executive Director Elaine Fogerty direct the activities of more than 200 onsite and off-site volunteers. Volunteers weed, plant, prune and help beautify the arboretum. Some volunteers keep Laurelwood safe and accessible by repairing its infrastructure. Others provide tours of the arboretum or lead educational and outreach programs. Last year, volunteers contributed more than 9,633 hours, valued at an estimated \$244,004. (based on the nationally accepted volunteer hourly rate).

THE KNIPPENBERG LEGACY



John and Dorothy Knippenberg developed a love for the genus *Rhododendron* and operated their 30-acre woodland in the Pines Lakes section of Wayne, New Jersey as a commercial nursery. They called their nursery Laurelwood Gardens. Dorothy began hybridizing rhododendrons in 1955, and continued

throughout her life to strive for plants with new interest and improvements, such as hardy large-leaved varieties and those with more flower substance, and later blooming periods. She was a knowledgeable horticulturalist, who encouraged others to see the beauty of rhododendrons and enjoy growing them. She and her husband, John, raised and/or hybridized approximately 50 new rhododendrons. Dorothy was responsible for naming more than twenty new cultivars, including the eight that were registered by the national and international rhododendron organizations. These hybrids included 'Blush Button,' 'Caroline Gem,' 'Hardy Giant,' 'Big Willy,' 'Burgundy Cherry,' 'Laurel Pink,' 'Laurelwood Snow Bunting' and 'Wayne Pink.'

Known throughout the country among rhododendron growers, the Knippenbergs maintained a test garden where they planted rhododendron cultivars sent to them from all over, subjected the plants to the New Jersey climate and developed cultivars for our East Coast climate. In 1960, the Knippenbergs offered to donate the entire 30 acres to the Township of Wayne to create a public park after their deaths. One condition of the agreement was that John and Dorothy could cultivate and maintain Laurelwood without restrictions as long as one might live. Dorothy expressed her vision for the site in 1964 during a visit to Laurelwood Gardens by members of the American Rhododendron Society when she stated that the property would, "become a public rhododendron park following our lifetimes."

After Dorothy's death in 2006, a formal partnership was formed between Friends of Laurelwood Arboretum (FOLA) and the Township of Wayne, and Laurelwood became part of the Township's park system. FOLA assumed responsibility for maintaining and improving the arboretum's horticultural inheritance.

HONORARY CHAIRPERSON

MAYOR CHRISTOPHER P. VERGANO



As a lifelong resident and Mayor of Wayne Township, I never imagined that our community could become more picturesque until I visited Laurelwood Arboretum. Its 30 acres of beautifully maintained gardens and woodland trails are simply breathtaking. This spectacular green space has a diverse wildlife population; features numerous varieties of flowers, plants and trees; provides soothing streams and ponds for visitors to relax by. In addition to all the beauty that nature has to offer, Laurelwood Arboretum is home to the Knippenberg Center for Education and the Educational Greenhouse, which offer activities and informative programs for our community to enjoy.

The arboretum was designed to ensure the following primary purposes: conservation, recreation and education. With a cooperative effort between Wayne Township and the nonprofit volunteer organization, Friends of Laurelwood Arboretum, I am confident that these goals will be met for decades to come. This *Art at the Arboretum* fundraiser will make an important contribution toward supporting FOLA in its efforts. I am proud to be part of the restoration and development of this botanical wonder. I wanted to take this opportunity to thank all of our valued volunteers for their commitment and dedication to Laurelwood Arboretum, as well as the residents of Wayne Township for their interest and support of the park and its important programming.

Warm Regards,

Christopher P. Vergano
Mayor



ART AT THE ARBORETUM VOLUNTEERS

Honorary Chairperson

Christopher P. Vergano,
Mayor of Wayne Township

Art at the Arboretum Chairpersons

Leslie and Stuart Reiser

Art at the Arboretum Committee

Ann Campbell
Joe Di Giacomo
Helene Elek
Andrea Geller
John Hegranes
Carol Huber
Bonnie Joachim
Sara McHugh
Jim McHugh
Alice Moskowitz
Diane Stern



LESLIE AND STUART REISER

Art Gala Chairpersons

There's no better way to fuse the beauty and magic of nature with the expression and creativity of art than through an experience like Art at the Arboretum, where the community at large, nature and gardening lovers along with art enthusiasts are brought together for a weekend of enjoyment at Wayne's hidden jewel – Laurelwood Arboretum.



As long time residents of Pines Lake, we have enjoyed walking through Laurelwood, as part of our weekend exercise routine, using it as our annual backdrop for our family holiday photos, and even, on occasion relying on this beautiful park for quiet contemplation in order to recharge from the rigors of everyday life. Our love for the park and the admiration we have felt to the Knippenbergs for their generous endowment of 30 acres of trails, woods, ponds, and a variety of indigenous plant and tree species, encouraged us to get involved with the Friends of Laurelwood (FOLA), initially due to Stuart's association as its pro-bono attorney.

As art lovers and collectors, we have frequented many iconic art museums throughout the world and have often observed that much of the inspiration for the great artistic works throughout the ages has been derived from the artist's personal interpretations of magical gardens and nature itself. From impressionists to modern and abstract artists, the serenity and beauty of the natural world have served as subject matter for countless paintings and sculpture. As the famous painter, Marc Chagall, said, "Great art picks up where nature ends."

We hope that you will learn a thing or two this weekend about how to purchase art for your own collections and will be similarly inspired by the creativity and originality of the artists we have selected not only for their personal stories but for their contributions to creating lasting expressions of creativity.

Leslie and Stuart Reiser



FRIENDS OF LAURELWOOD ARBORETUM BOARD OF DIRECTORS

Alice Moskowitz
President

Jim McHugh
1st Vice President

William Lauber, CPA
Treasurer

Carol Huber
2nd Vice President

Ruth Hayden
Recording Secretary

Dawn Healey

Margaret Kerstner

Roland Reynolds

Barbara Hegranes

David A Kooistra

Rick Wild

Bill Mains

Sara McHugh

Executive Director

Elaine Fogerty

Horticultural Manager

Joan Scott-Miller

Office Manager

Pam Himeles

Board Advisors

Sue Burke

Joseph Di Giacomo

Alex Fadynich

Al Fitzburgh

John Hegranes

Bonnie Joachim

Kasey Lai, CPA

Peter Lowry, CPA

Stuart Reiser, Esq.

Kathy Salisbury

Ray Vanaria, CPA

WE THANK OUR CONTRIBUTORS, SPONSORS, AND FRIENDS

The Art at the Arboretum Executive Committee and the Board of Trustees of Friends of Laurelwood Arboretum gratefully acknowledge the generous Sponsors, Contributors, Friends, and Volunteers who have made this weekend a success.

SPONSORS

- Harwood Lloyd, LLC
Dessert Reception
- David Ezra Salon – Artist Lodging
- Lakeland Bank – Brochure Printing
- The John D. Walsh Company, Inc
Music

CONTRIBUTORS

- Apple Rock – Display Panels
- Canete Garden Center, Inc.
Gift Bags
- Gilby's – Tee Shirts
- Shoppers Discount Liquor – Liquor
- Steve Olimpio Detective Agency
Valet Parking and Security Services

FRIENDS

- John & Barbara Hegranes
- Margaret Kerstner
- Jim & Sara McHugh
- Elizabeth Montagne

VOLUNTEERS

- Helene Elek – Ad Journal
- Margo Fishler –
Promotional Materials & Invitations
- Andrea Geller – Art vetting
- John Hegranes
Data Management & Record Keeping
- Carol Huber – Record Keeping
- Frank Juliano – Guest Speaker
- Jennifer Klecha – Photography
- David Kooistra
Installation of Art Hanging System
- Rick Wild
Installation of Art Hanging System

STAFF

- Anne Campbell – Webmaster

Music for Gala is provided by the William Paterson University Jazz Department.
Catering for the weekend events is provided by Dawn's Catering.



GUEST SPEAKER



FRANK JULIANO
Executive Director, Reeves-Reed Arboretum

As Executive Director, Frank Juliano brings innovation and community building to all aspects of Reeves-Reed Arboretum. This includes strengthening and rebranding of the arboretum's core education and horticulture programs, operations, cultivation and fundraising, as well as a more comprehensive and inclusive visual and performing arts initiative.

Prior to Reeves-Reed Arboretum, Juliano served as the Executive Director of The Hudson Valley Writers' Center, in Westchester, New York, and the Greenwich Arts Council, in Connecticut. He also spent seven years at Wave Hill, a public garden and cultural center in New York City.

THE ARTISTS

Read about them on the following pages

Bart DeCeglie	Cole Sternberg
Christopher Engel	Shane Townley
Andrea Geller	Alix Hallman Travis
Raisa Nosova	Johan Wahlstrom
John Sanders	Joe Waks

Visit our website at www.laurelwoodarboretum.org



BART DeCEGLIE

Floral Park, New York

Bart DeCeglie has been an active painter and freelance illustrator for 25 years and has taught at art colleges such as Pratt Institute and the Fashion Institute of Technology. He has also led Plein Air workshops throughout New York.

DeCeglie was born in Italy and studied there until he was 17 years old. He came to New York and after finishing high school studied Illustration and painting for four years at Phoenix School of Art and Design (now Pratt Manhattan).

He is currently teaching at the National Art League, UFT Queens & Manhattan Learning Centers and the Art League of Long Island. DeCeglie has returned many times to Italy to paint and study.

DeCeglie has had a successful career as a freelance commercial artist. His clients are both consumer and pharmaceutical advertising agencies. His real love is impressionism, as can be seen in his style of painting. His paintings give a feeling of serenity—quite the opposite of his energetic personality.



▲ *On Time*

Works by DeCeglie have been exhibited in Florida, Michigan, Italy, Pennsylvania, Connecticut and as far east in New York as the Hamptons. The father of five children, he and his wife have traveled extensively throughout Italy, Grand Cayman, New York State, Michigan and Florida. Living in New York, his paintings reflect the everyday lives of ordinary people.





CHRISTOPHER ENGEL

Halcottsville, New York



Christopher Engel's art education began at the Art Center College of Design, now located in Pasadena, California. He later moved to New York and studied at the Art Students League. While at the League, Engel studied with renowned abstract expressionist painter Richard Pousette Dart. During this time, he began creating works depicting the depressing and suffocating elements of the New York subway system (The Turnstyle Series). As a result of this experience, the boundaries between objective and nonobjective or realistic and abstract work became blurred.



▲ *Parade*

executed from 1979 to 1980 in a primitive style with titles structured in a narrative sequence. In the 1980s, Engel showed in the East Village during the heydays of the art scene there. During this time, he maintained studios in Manhattan and Hoboken, New Jersey. Later in the decade, he left New York for two years to live in Seattle, Washington.

In the 1990s, Engel executed a series of 17 bronze pieces related to the paintings and etchings from the Turnstyle Series. He was invited a second time to show at Hallways. The show, called "Men in Suits," featured works by artists who work with similar economic, political and social themes. Engel is concurrently developing a website focusing on the same material.

This, Engel says, allowed him to travel down the sometimes semi-abstract, semi-realistic and symbolic path of the Turnstyle Series, which preoccupied him from 1982 until the present. The series began as a social commentary on the subways and, by extension, the conditions in society in general. As the work progressed over the years it became more abstract, symbolic and personal.

In 1982, Engel was invited by Roger Denis, curator at the well-known Hallways Gallery in Buffalo, to mount a solo show of personal autobiographical works called, "Rights of Passage." This consisted of a series of 37 pastels on sandpaper based on emotionally charged moments from his childhood. They were



ANDREA GELLER

Paramus, New Jersey



Andrea Geller first picked up a brush at the age of 12 and has not put it down since. After studying painting at Cornell University for two years, she completed her undergraduate education at Parsons School of Design in New York City. Shortly after earning her Bachelor of Fine Arts degree, she began a successful career as a freelance illustrator and graphic designer, with editorial clients such as *The New York Times*, *Washington Post*, and *Psychology Today*. In 2004, she earned her Master of Fine Arts degree in painting from William Paterson University.

For Geller, painting and life go hand in hand as she balances her career as a college professor and a professional artist. Her work focuses on figures moving within landscapes alone or in relationships with others, reflecting her strong interest "in the space between people as they move." Her recent paintings, "Water Meets Land I" and "Water Meets Land II," were inspired by her experience walking Robert Smithson's Spiral Jetty in the Great Salt Lake.

She exhibits widely and her work is included in numerous private collections. "Floating," a painting from her water series, was selected by US Ambassador Daniel Speckhard for inclusion in a three-year exhibition at the US Embassy in Athens, Greece.



▲ *Water Meets Land I*



RAISA NOSOVA

Hoboken, New Jersey



Raisa Nosova is a Russian-born American artist who received her formal art education from the Fashion Institute of Technology, Vesalius College in Brussels, and the Art Students League of New York.

Curiosity about various cultures and a clear perception of the world have led Nosova to encounter the world through travels to Europe, the Near East, and Southeast Asia. She shares her perceptions through her "atmosphere-capturing" paintings, which are now beginning to take an expressionistic turn.

Nosova is currently working on an upcoming solo exhibition at Bernard Cauchet Gallery in London. Her work has been exhibited in solo shows in Paris, Manhattan, Brooklyn, and Newark and Montclair, New Jersey.

Nosova has been recognized by art magazines such as *Fresh Paint Magazine* and *Washington Square Review*, as well as the Monmouth Museum, the Whistler

Museum of Art, Bakhrushin Central State Theatre Museum in Moscow, SCOPE art fair in Miami, Armory Art Center and New Jersey Institute of Technology Museum.

Raisa Nosova is a recipient of the George T. Dorsch Award 2012, Fannie Kipnes Memorial Award for Oil Painting 2014 and the N.A.W.A. 125 Years: Women in Vision Third Place Award 2015.



▲ *Molle*



JOHN SANDERS

Roxbury, New York

Born in New York City, J. Sanders has been a sculptor since 1968 when he was 15 years old. He began as a woodcarver and then moved on to granite and marble carving. For most of the past 40 years, he has concentrated on steel sculptures.

Sanders has created his own technique in steel, which he calls "flame-carved steel"—a direct outgrowth of his early wood and stone carvings. Flame-carved steel is executed with an oxygen-acetylene torch; it renders the same textural results in steel as one might see in carved stones.

In the past 20 years, Sanders has also been forging steel, which gives his massive steel sculptures the feeling of lightness through the rhythm and movement of the forged elements incorporated into the sculptures. He returned to wood sculpting as a means of creating models for large outdoor steel or stainless steel sculptures.

Sanders increased his range of expression during a period from 2010-2012 by incorporating a daily practice of executing pastels and other works on paper. At the same time, he has been working on wall pieces made of bronze, copper, brass, stainless steel and steel.

A graduate of Berkeley, his one-man shows include the Robert Steele Gallery, Elizabeth Harris Gallery and Max Hutchison Gallery in New York City; Osuna Gallery in Washington, D.C.; and Worth Rider Art Gallery in Berkeley, California. He has also exhibited his work in numerous group shows.



▲ *Sculpture 3*



COLE STERNBERG

Los Angeles, California



Cole Sternberg works in a range of formats including painting, installation, video, and writing. Much of his work has focused on a variety of social issues, from current human rights activism and its relationship to the law, to the environment, the media and concepts of content overload. The works tend to be subtle or subversive in nature, driven by elegant visual concepts and poetry rather than overt political statements. He is interested in the intersection between humanity and humankind and how their lack of congruity hinders social progression and development.



▲ *A Synthetic Landscape*

Sternberg has exhibited nationally and internationally, at The American University Museum in Washington, DC; El Segundo Museum of Art, El Segundo, California; Hochhaus Hansa, a Ruhr.2010 Museum, Dortmund, Germany; Primary in Miami, Florida; David B. Smith Gallery in Denver, Colorado; Los Angeles Nomadic

Division; Paris Photo | LA in Los Angeles; e105 Gallery in Berlin, Germany; Arted House, East Hampton, New York; and LA><ART and MAMA in Los Angeles. His works are held by major collections throughout the world.

Sternberg is currently working on a documentary about his journey across the Pacific on a shipping vessel, the reconstruction of Ray Johnson's infamous Room 247 of the Inn at Baron's Cove, editions with LA><ART and Exhibition A, and various exhibitions and dreams.

RAFFLE

Cole Sternberg has generously donated the above 28" x 16" acrylic and watercolor on linen entitled, "A Synthetic Landscape," valued at \$4,800. The framed painting will be raffled at the art gala.



SHANE TOWNLEY

New York City



Shane Townley's work and search for artists has taken him throughout the world looking for inspiration through social interactions with local people, foods and cultures. His choice of artist's work is often described as having deep meaning, feeling, and emotion, with a story behind each artist's concept that brings the viewer on a journey of meditation, calmness and peace.

All of the art work Townley represents is original and one of a kind, whether it is mixed media, enamel on wood, or oil or acrylic paintings with texture on canvas. Townley only deals in originals from the artists' studios.

Townley is currently an internationally collected artist, foundation founder and art director. His own work can be found in private and corporate collections worldwide. He has exhibited and curated shows in New York, New Jersey, Beverly Hills, San Diego, Las Vegas, Palm Desert, Monterey and Scottsdale, Arizona with connections to galleries in Venice, Italy and Barcelona, Spain. In 2013, he founded the Townley Arts Foundation, a nonprofit dedicated to arts education.

When Townley is not traveling the world in search of his next inspiration, New York City is where he works and lives with his wife Adela.



▲ *Far Off*



ALIX HALLMAN TRAVIS

Halcottsville, New York



Alix Hallman Travis is a sketcher—in the park, at a dance, or on the subway. She sketches in a black sketch book she carries everywhere. She rapidly records the shapes and postures of the figures and buildings flashing by in front of her. She moves quickly to record what captures her eye. The speed of sketching is integral to her process, reducing the drawing to the essential.

"The figure that attracts me is in motion with a striking gesture. The sketch, not

posed but observed en situ, must be executed quickly. The challenge is to use the sketch of the moving figure in a larger more elaborate composition without losing the illusion of a moment in a sequence of movements. I maintain the spontaneity of the original by redrawing the figure freehand without the aids of scaling techniques. I do not work from photographs."



▲ *Village*

The colors on her palate are saturated and bold. Oils, for Travis, are large. The tools required fill her hand and the pieces show clear and intentional evidence of the artist at work with the palette knife.

Travis finds her inspiration from many sources, including other artists like the Fauvists, the German and Boston expressionists, Regionalists Thomas Hart Benton and Reginald Marsh. In addition, she finds inspiration in a new medium, location, subject, the size, shape of the surface on which she is painting and in her students.



JOHAN WAHLSTROM

New York City



Johan Wahlstrom is one of today's brightest artists who is making a conscious effort to describe the social and political landscape of our contemporary world. His provocatively titled pieces are social critiques, reflecting the artist's effort to grapple with a world of extreme polarities.

Wahlstrom creates his paintings quickly, inspired by cryptic observations jotted on scraps of paper littering his Malaga, Spain studio.

"I decide what titles I will work with each day and set myself into the mood with loud music. I try to paint the title to get the viewers to spin their brains toward the story." Some of the titles include, "It's Boring to Die," "House of Lies," "Truth Is A Lie," "Time to Scream," "Don't Die As A Virgin" and "So in Debt."

The titles may be ironic, but the paintings' narratives strike a true emotional chord. The haunted people in his paintings seem to be crying out for sustenance, both physical and psychic.

Wahlstrom's path to painting was unconventional, with unexpected turns that speak to a vital, original creative mind. Born in Stockholm to a lineage of artists, Wahlstrom was first a musician and singer who painted only infrequently. The rock and roll life "brought me too much trouble," and he moved to France where he did nothing but paint. This launched his new career as an artist. The series, "It's Boring to Die" and "House of Lies" has traveled around Europe, New York and Miami.



▲ *Welcome to My Mind*



JOE WAKS

Bayonne, New Jersey



Joe Waks is a painter and printmaker who lives in Bayonne, New Jersey. He is also an attorney who for 18 years worked at the highest levels of local, state and federal government in his beloved Garden State.

Waks is an audacious commentator on the kooky times in which we live. Observant as a seasoned reporter who never leaves home without his "Little Pad of Ideas," he doesn't let a headline, artifact or late-night infomercial get by him. He is

constantly unearthing the teeny-tiny things that go unnoticed in our mundane workaday world. His mixed media creations serve as a commentary on the interconnected world we inhabit.

Underscoring his passion for politics and popular culture, his work reflects our consumerist ethos by "recontextualizing" the icons and emblems common among disparate human civilizations. He seeks to temper contemporary reality with humor, irony and a bit of hope.

Waks recently worked with the Experimental "Printmaking Institute, Lafayette College in Easton, Pennsylvania to create new silkscreens. In 2015, he completed a large-scale mural in Jersey City. His next solo exhibition of new paintings is in September, 2016 at Newark's Index Art Center.

Waks was a 2012 Fellow at the Printmaking Center of New Jersey in Branchburg and a 2008 New Jersey Print and Paper Fellow at the Brodsky Center for Innovative Editions at Rutgers University, New Brunswick.



▲ *Miracle Starts Monday*

WE THANK OUR ADVERTISERS

Alpha Graphics	Lincoln of Wayne
Ankle & Foot Associates	Lofaro & Reiser, LLP
Apple Rock	Loren Ferraro, LLC
BD	Mack's American Bar & Grill
Lynn Brescia	Market Basket
Canete Garden Center, Inc	Nail Plus
Cardinal Frame & Fine Art	New Jersey Frame & Moulding
CHT Group	North Jersey Animal Hospital
Cipolla & Co, LLC	Outside the Box
Cole Shotz, PC	Positano
Couch Braunsdorf Insurance Group	Quickchek
David Ezra Salon & Spa	Reeves-Reed Arboretum
Dawn's Catering	LC Reiser Consulting
DeVito & Co, LLC	Riverside Nursery
Dunkin' Donuts	Sal Lauretta For Men
Helene Elek Graphic Design	Samuelson Furniture
Elite Automotive Repair	Scura, Wigfield, Heyer & Stevens
Rodney P. Frelinghuysen	Shapiro, Croland, Reiser,
Gate House Framemakers	Apfel & Di Iorio, LLP
Gilby's	Shoppers Liquor
Glenwild Garden Center	Shoppers Pharmacy
Gramkow, Carnevale,	Shoprite of Oakland
Seifert & Co. LLC	Spectrum Painting, LLC
Hanson & Ryan, Inc	Steven Olimpio Detective Agency
Harwood LLOYD, LLC	Sutton East Boutique
Jan Fence	The A. L. Levine Family Foundation
Harrington & Lombardi, LLP	The John D. Walsh Company, Inc
Joseph Di Giacomo	Till, Debra & Peter
Beth and Ed Julie	Wayne Orthopedic Physical Therapy
Kasey Lai, CPA	Wayne Suburu, Inc
Keil Heating & Air Conditioning	Wayne Tile
Lakeland Bank	Weinberg, Lieberman & Company
Jeffrey Lesser	Wells Fargo Home Mortgage
Liebfred Landscaping Services	William Paterson University Foundation



HARWOOD LLOYD, LLC

COUNSELLORS AT LAW

**Harwood Lloyd Proudly Supports
Laurelwood Arboretum's
"Art at the Arboretum"**

130 MAIN STREET
HACKENSACK, New Jersey 07601
Telephone (201) 487-1080/Facsimile (201) 487-4758

www.harwoodlloyd.com

350 FIFTH AVENUE, 59th Floor
EMPIRE STATE BUILDING
NEW YORK, NEW YORK 10118
Telephone (212) 268-5136/Facsimile (212) 324-1198



813 Franklin Lake Road * Franklin Lakes, NJ 07417

(201) 891-2000 * WWW.MARKETBASKET.COM

Open 7 Days a Week

Fine Catering * Prime Meats * Fresh Seafood

Hand-Picked Produce * Delicatessen

Imported & Artisanal Cheeses

Store-Baked Goods * Fresh Flowers

Hand-Made Chocolates & Confections

Gourmet Gift Baskets



In recognition of our dear friends
Leslie and Stuart Reiser's efforts
on behalf of the
Friends of Laurelwood Arboretum
we extend our congratulations
on a job well done.

You have surely proceeded
following the famous writer
Robert Louis Stevenson,
when Stevenson said

*"Don't judge each day
by the harvest you reap,
but by the seeds you plant."*

Debra and Peter W. Till



THE DIFFERENCE OF **ONE COMPANY**

MAKING AN IMPACT ON THE WORLD OF HEALTH. Across the healthcare continuum, BD is known for medical technology, devices and laboratory equipment—from medication management and parenteral drug delivery to diagnostics and solutions for clinical research. What may be less known about us is the difference BD has made in untold millions of lives in ways as diverse as helping enable inoculation of children for the final eradication of polio, identifying infectious organisms and providing the research tools to help advance the discovery of a vaccine for AIDS. Today our associates serve every corner of the world, united by one purpose: *advancing the world of health*. And through our extensive experience with partnerships, our depth of insights and exceptionally broad portfolio of solutions from discovery to delivery, we aim to make an even greater difference in human health across generations. Discover the difference one company can make. **Discover the new BD.**

Learn more about the Difference of One at bd.com/Discover-New



Advancing the
world of health

© 2016 BD. BD and the BD Logo are trademarks of Becton, Dickinson and Company. BDCR-20346

JEFFREY LESSER
of
Pine, Lesser & Sons
Clifton, New Jersey

CONGRATULATES
LESLIE & STUART REISER
AND THE
FRIENDS OF LAURELWOOD

for organizing the
“Art at the Arboretum”
weekend!



Proud Supporter Of FOLA And Our Precious Outside.

logos • corporate identity • advertising • direct mail • signage • website design



outside-thebox.net • 267.566.3295



The A.I. Levine Family
Foundation, Inc.

Wayne Hills Mall
Wayne, New Jersey

*We wish you
success
in this
endeavor!*



Thank you for your work in the community!
We are proud to be among
the Friends of the Laurelwood Arboretum!

For over 40 years, entrepreneurs, small businesses, middle market enterprises, trusts and publicly held companies have trusted their accounting services to Weinberg, Lieberman & Co. (WLCO). At WLCO, your aspirations become ours. WLCO will support you with deep experience, sound advice and a range of services from the boardroom to the courtroom. We look forward to meeting you and your business challenges.



Weinberg, Lieberman & Co.
Certified Public Accountants

Jeffrey I. Lieberman, CPA/ABV/CFP

973-403-0400 973-403-1653(f) jl@weinberglieberman.com
155 PASSAIC AVENUE – SUITE 420, FAIRFIELD, N.J. 07004

APPLE  ROCK[®]

NEW YORK | NEW JERSEY

Where Better Ideas Are Built[®]

Official Supplier of Art Exhibition Systems



Scott A. Walode
President, Apple Rock New York / New Jersey
www.applerock.com

HANSON & RYAN INC.
Insurance Since 1878

87 LACKAWANNA AVE
TOTOWA, NJ 07512
973-256-6000
www.HANSON-RYAN.com

Best Wishes and Continued Support to

Friends of
Laurelwood Arboretum
Connecting People with Nature



Your local agent covering all your **INSURANCE** needs!

 **PERSONAL**
 **BONDS**

 **HEALTH**
 **LIFE**

 **BUSINESS**
 **PAYROLL**

SUPPORTING
GROWTH
FOR YOUR BUSINESS AND FOR FOLA



Offering comprehensive, personalized digital marketing expertise
for your business and professional career.



Leslie@lcreiserconsulting.com
lcreiserconsulting.com



DEVITO & Co., LLC

CERTIFIED PUBLIC ACCOUNTANTS

**SPECIALIZING IN TAX SERVICES,
FORENSIC ACCOUNTING,
AUDITS, COMPILATIONS, AND REVIEWS**

**250 MOONACHIE ROAD SUITE 200
MOONACHIE, NJ 07074**

PHONE: 201-440-1491

FAX: 201-440-1493

**WWW.DEVITOCPA.COM
INFO@DEVITOCPA.COM**



*IT'S MORE THAN OWNERSHIP,
IT'S MEMBERSHIP.*

To begin your Lincoln Black Label journey, call
973-692-2000

Lincoln of Wayne
1910 Route 23 Wayne NJ 07470

We are proud to
support **FOLA**

Cole Schotz P.C.

coleschotz.com

New Jersey

New York

Delaware

Maryland

Texas

Florida



I Proudly Support the Friends of Laurelwood Arboretum



Carole "Lynn" Brescia
International President's Premier
Top 1% Worldwide
Call Direct: 201.848.3202
www.lynnbrescia.com

**COLDWELL
BANKER**

RESIDENTIAL BROKERAGE

Wyckoff/Franklin Lakes Office
360 Franklin Avenue • Wyckoff, NJ 07481

*Rankings based on Coldwell Banker's award criteria - Jan. 1 - Dec. 31, 2013

©2014 Coldwell Banker Residential Brokerage. All Rights Reserved. Coldwell Banker Residential Brokerage fully supports the principles of the Fair Housing Act and the Equal Opportunity Act. Operated by a subsidiary of NRT LLC. Coldwell Banker® and the Coldwell Banker logo are registered service marks owned by Coldwell Banker Real Estate LLC. 62575 4/14

In recognition of your work. Thank you to the Friends of the Laurelwood Arboretum!

For current leasing opportunities from 500 sq. ft. to 140,000 sq. ft.
in Englewood Cliffs, Moonachie, Fairfield, Boonton and Paterson,
please call **201-585-7777**



A full service Property Management Company
120 Sylvan Avenue-Ste. 205, Englewood Cliffs, NJ 07632



**A car you can love
from a dealer you can trust**



SALES, PARTS, AND SERVICE!
SERVING OUR COMMUNITY FOR OVER 35 YEARS!
**WE OFFER
GREAT VALUE AND SERVICE!**

2204 HAMBURG TURNPIKE WAYNE, NJ
973-835-4700

SALES: MON-THU 9-8 FRI-SAT 9-6
SERVICE: MON-FRI 8-6 SAT 8-3

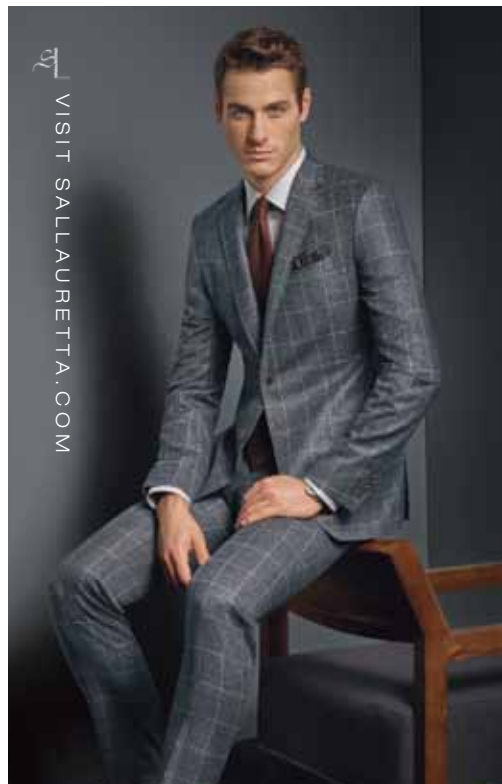
www.WAYNESUBARU.com



At the Arboretum



Wayne Tile Company
www.waynetile.com



VISIT SALLAURETTA.COM

CANALI

BOSS
HUGO BOSS

HICKEY FREEMAN

ETON

Brioni

SALLAURETTA for men
Style...Inherited

621 Godwin Avenue Midland Park, NJ 07432
(201)444-1666 sallauretta.com

DAWN'S CATERING & SERVICE OF RIDGEWOOD, NJ

FROM THE SIMPLE TO THE ELEGANT

DAWN L. JAICKS

Cell: 201 725 5503
email: punchbug2@verizon.net

201 447 9747
Fax: 201 447 9769

dawns catering.com

Did you know that
Pablo Picasso was one of the
first master artists to
use house paint?



SPECTRUM
PAINTING & POWERWASHING...
Serving the Northern New Jersey
community and a proud supporter of
Art at the Arboretum!

Tel: 973-706-6033
www.spectrumpaintingllc.com



*Beautifying properties
throughout the Wayne
community and beyond*

.....

**Leibfred Landscaping
Services**

133 Jacksonville Road
Lincoln Park, NJ 07035
Tel: 201-248-1080



Compliments of The John D. Walsh Company, Inc.

A distributor of essential oils, aroma chemicals,
concretes and absolutes supplying the fragrance
and flavor industry since 1942.



Ringwood, New Jersey

In recognition of
Leslie and Stuart Reiser's
efforts on behalf of the
**FRIENDS OF
LAURELWOOD ARBORETUM**

Kevin P. Harrington
Harrington & Lombardi LLP
508 Paterson Hamburg Turnpike
Wayne, New Jersey



Couch
INSURANCE
Braunsdorf

Experience • Diligence • Professionalism • Since 1903

Solutions for all your insurance needs:

- Commercial Insurance
- Professional Liability
- Personal Lines
- Employee Benefits
- Title Insurance

Contact Us Today!

701 Martinsville Road
Liberty Corner, NJ 07938
908-542-1700

Gary L. Pinckney, Esq
Tel: 908-660-0225
Fax: 908-292-1154

www.couchbraunsdorf.com

gpinckney@couchbraunsdorf.com



SHOPPERS

PHARMACY
 FREE PICK UP
 & DELIVERY

SNEHA BANKER
 Pharmacist in-charge

(973) 835-9900
 Fax: (973) 835-9907

750 Hamburg Turnpike
 Pompton Lakes, NJ 07442

Shopperspharmacy@gmail.com
 www.shoppers-pharmacy.com

SHOPPERS

 Discount Liquor

P.G. PATEL
HITESH PATEL

(973) 835-8887
 Fax: (973) 835-8917
 Cell: (201) 815-0236

744 Hamburg Turnpike
 Pompton Lakes, NJ 07442

Jack32370@yahoo.com



alphagraphics®

Best wishes from the folks at
 AlphaGraphics of Wayne/Totowa...

**Call us for ALL Your Printing &
 Communications Needs**

- Annual Reports
- EDDM Postcards
- Brochures
- Business Cards
- CD/DVD Replication
- Calendars
- Cards & Invitations
- Corporate/Brand Identity
- Design Services
- Dimensional Mail Campaigns
- Personalized Direct Mail Campaigns
- Email Campaigns
- ePublishing
- Forms & Labels
- Mobile Apps & Websites

- SMS/MMS Text Message Campaigns
- Newsletters & Flyers
- Pay-per-click
- Photo, Signs & Photobooks
- Posters, Signs & Banner
- QR Codes
- Personalized Landing Pages (PURLS)
- Promotional Products
- Social Media
- Letterhead, Stationary & Envelopes
- Trade Show & Presentation Materials
- Variable Printing
- Web Design & Search Engine Optimization
- Yearbooks, Manuals & Book Printing

40-E Commerce Way, Totowa, NJ 07512

973.812.6600 • us543@alphagraphics.com • www.us543.alphagraphics.com



QuickChek
 proudly sponsors the

**Laurelwood
 Arboretum!**

Come visit one of our stores today



ShopRite is proud supporter of the
 Art at the Arboretum
 weekend!

14 Post Road
 Oakland, New Jersey

KATHLEEN C LAI
 Certified Public Accountant

Kasey Lai
 KCMLai@optonline.net

204 Beech Terrace
 Wayne NJ 07470

973-616-1867
 Fax 973-907-7920

Positano

RESTAURANT & PIZZERIA
 CATERING FOR ALL OCCASIONS

(973) 628-6863 • FAX (973) 628-4501
 245 BERDAN AVE • WAYNE, NEW JERSEY 07470
 WWW.POSITANORESTAURANT.COM

Experience the difference of a
 world class Salon, that brings Beauty and Wellness
 together in one location



David Ezra Salon & Spa
 1255 Hamburg Trpke
 (973) 628-7803

We thank David Ezra Salon and Spa, the sponsors of the artist's lodging



At the Arboretum

NEW JERSEY FRAME & MOULDING

Proudly supports
“Art at the Arboretum”

62 Kearney Street
Paterson, NJ 07522
973-684-6001 | Njframe00@aol.com



615 Ringwood Ave.
Pompton Lakes, NJ 07442
973-835-5729
www.gilbys.com



At the Arboretum

CANETE

LANDSCAPE & GARDEN CENTER

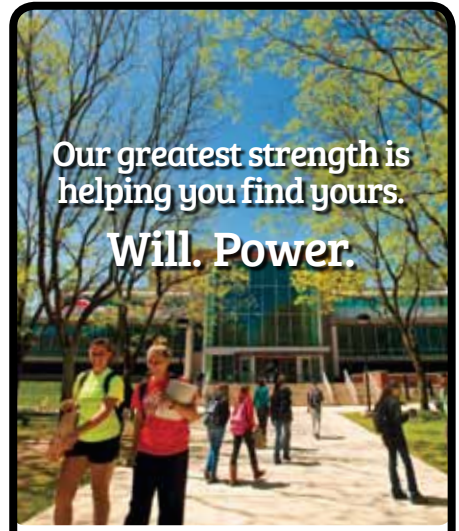
Local Year Round
Garden Center



825 BLACK OAK RIDGE ROAD, WAYNE, NJ
(973) 616 LAWN (5296) | CANETE.COM

Our greatest strength is
helping you find yours.

Will. Power.



WILLIAM PATERSON
UNIVERSITY

wpunj.edu

SUTTON EAST BOUTIQUE

300 Franklin Avenue
Wyckoff, NJ 07481

Mon - Fri 9:45 - 7:30
Sat 9:00 - 6:00
Sun 10:00 - 6:00

Plus
Nail

1094 Hamburg Tpke, Wayne, NJ 07470
tel: 973-872-1100, 973-872-0113
web add: www.nailplususa.com



*“I am good at only two
things, and those are
gardening and painting.”*

—Claude Monet



At the Arboretum

Steve Olimpio Detective Agency

steveolimpio@gmail.com

steveolimpiodetectiveagency.com

P.O. Box 276
Butler, New Jersey
07405



At the Arboretum

est. 1928
Glenwild
GARDEN CENTER
& NURSERY



www.glenwildgardens.com
104 Glenwild Ave.
Bloomingdale 973-838-0174

800-300-KEIL

HEATING
AIR CONDITIONING
GENERATORS



KEILHeatAC.com

Providing representation to our neighbors
in Passaic County for over 40 years.



Attorneys at Law
1599 Hamburg Turnpike,
Wayne, New Jersey 07470
Tel: (973) 696-8391

jscura@scura.com
dwigfield@scura.com
cheyer@scura.com
dstevens@scura.com
www.Scura.com

GATE HOUSE
Framemakers



We are well known for our
museum quality custom framing,
experienced artisans, and fabulous
selection of designer mouldings
in every price range.

Our other services include...Painting
& Photo Restoration, Art Appraisals,
Packing & Crating, Custom Mirrors

447 Route 23 South, Pompton Plains, NJ
973-835-5401/gatehousegalleries@gmail.com
www.GateHouseGalleries.com



BEST WISHES TO THE FRIENDS OF THE LAURELWOOD ARBORETUM!



From

Rodney P. Frelinghuysen

Member of Congress

New Jersey's 11th Congressional District



20 Court Street
Hackensack, New Jersey 07601
Tel: (201) 498-0400
Fax: (201) 498-0016
Web: www.njlawconnect.com

SUPPORTING LAURELWOOD ARBORETUM TO PROMOTE ART & NATURE

Representing businesses and individuals in complex litigation in state & federal courts, corporate & partnership disputes, contested wills & estate administration, Internet law, foreclosure & asset recovery, and attorney ethics defense.

ANKLE & FOOT ASSOCIATES OF NORTH JERSEY, P.C.

KEVIN M. HEALY, D.P.M.
JOHN J. McEVY, D.P.M.
DOUGLAS J. MCKAY, D.P.M.
KIRSTEN L. BARISONEK, D.P.M.


152 LAKEVIEW AVE
CLIFTON, NJ 07011
973-340-8970

540 HAMBURG TPK, STE 101
WAYNE, NJ 07470
973-956-8600




Elite Automotive Repair
 eliteautomotiverepair1@gmail.com
2252 Hamburg Turnpike
Wayne NJ, 07470
862.248.0633

Douglas Bright Owner Michael DeStefano Technician



North Jersey
ANIMAL HOSPITAL

Mark Riedel, DVM



197 Hamburg Turnpike
Wayne, NJ 07470

Phone: 973-595-8600
Fax: 973-595-8513
www.northjerseyanimalhospital.com

MACK'S
American Bar & Grill

BANQUET ROOM



BOOK YOUR NEXT EVENT

- Birthdays • Anniversaries • Weddings • Bar/Bas Mitzvahs • Reunions • Meetings
- Seminars • Graduations • Retirement Parties • Ceremonies • Repasts
- Wine Tastings • Communion/Confirmations • Christenings

- Catering for All Occasions
- Seating for up to 65 People
- Dance Floor - DJ Available
- Multiple New Packages
- Valet Parking

300 Wanaque Avenue, Pompton Lakes, NJ 07442
973.513.9543 MacksAmerican.com



Ready to grow again?

Let's make it happen!



Call today! 973-706-7620

Cardinal Frame & Fine Art *There's an Art to Good Framing*

Betty & Bill Houston

270A Wanaque Avenue
Pompton Lakes, NJ 07442
Phone 973-835-4111 FAX 973-835-3121

cardinalframe@gmail.com



25% off framing

*Proud supporter of the
Laurelwood Arboretum*

Loren Ferraro LLC

Accounting Services - Tax Preparation, CPA

666 Godwin Avenue
Midland Park, New Jersey 07432

(201) 447-1919



At the Arboretum



IN HONOR OF OUR WONDERFUL FRIENDS

LESLIE AND STUART REISER

WHO BRING SO MUCH BEAUTY, JOY AND COLOR INTO THE
WORLD!

WITH ALL OUR LOVE AND ADMIRATION,
BETH AND ED JULIE



Natalie and Gary Haar
franchise owners of



America's favorite every day, all-day stop for coffee and baked goods –
are proud to support the "Art at the Arboretum" weekend!

525 Cedar Hill Ave. Wyckoff, NJ 07481



WELLS FARGO
HOME MORTGAGE

Proudly supports FOLA and the "Art at the Arboretum" weekend

JOHN F. RONDİ

87 Berdan Avenue, Wayne, NJ 07470 | 973 886 3200 ext. 3201



At the Arboretum



Office: 201-651-0222

Fax: 201-651-0202

riversidenursery@gmail.com

riversidenursery-nj.com

- Annuals & Perennials
- Wide Variety of Specimen
- Large Caliper Trees (up to 10")
- Ornamental Shrubs & Trees
- Bulk Decorative Stone
- Topsoil/Mulch
- Delivery Available

12 ACRES OF QUALITY STOCK & HARDSCAPE MATERIALS

237 Ramapo Valley Road Oakland, NJ 07436

GRAMKOW, CARNEVALE, SEIFERT & CO., LLC

Certified Public Accountants and Consultants

Proudly supports the Laurelwood Arboretum



Two Forest Avenue - Suite 1
Oradell, New Jersey 07649

Telephone: 201-599-0008
Web : www.gcs-cpa.com/
Email: info@gcs-cpa.com

Cipolla & Co.

CPAs & Litigation Consultants

Family Law/Matrimonial

Economic Damages • Valuation

Tax Fraud Defense • White-Collar Crime

Malpractice Defense • Failed Earn-Outs

Business Divorce

Recognized by Law Journal Readers:

Best Matrimonial Valuation Provider

Best Overall Expert Witness Provider

Best Bankruptcy Valuation Provider

Best Economic Damages Valuation Provider

www.cipollacpa.com

NORTH JERSEY | SOUTH JERSEY | NEW YORK CITY | LONG ISLAND | PHILADELPHIA

Since 1935
SAMUELSON
LEGENDARY FURNITURE

Renaissance Albany
Cauhous Design / GS Associates



Luxury you dream of...



Proud recipient of the
ISHP Vendor Quality Award

www.samuelsonfurniture.com

MAGAZINE ART DIRECTOR

GRAPHIC DESIGNER

GARDEN ENTHUSIAST

*...“we’ll
make our
garden
grow”...*



HELENE ELEK • HELENEELEK@GMAIL.COM

REEVES-REED ARBORETUM

**A Place
to Grow
for
Everyone**



Reeves-Reed Arboretum

165 Hobart Avenue, Summit, NJ 07901

(908) 273-8787

reeves-reedarboretum.org



Together we can make a difference.

At Lakeland Bank, giving back to the communities we serve has always been one of our top priorities. Whatever it takes to keep our local towns and neighborhoods strong and thriving, you can count on us to lend a hand.

LakelandBank.com ■ 866-224-1379




Lakeland Bank
We're simplifying banking.®

MEMBER
FDIC

Integrity • Experience Creativity

Our values reflect the values of the
LAURELWOOD ARBORETUM
and its ongoing efforts towards
preservation and conservation
of this beautiful, public park.

We congratulate our partner and his wife
STUART AND LESLIE REISER
for spearheading the wonderful event,
“ART AT THE ARBORETUM”

ShapiroCroland

Shapiro, Croland, Reiser, Apfel & Di Iorio, LLP

ATTORNEYS AT LAW

CONTINENTAL PLAZA II | 411 HACKENSACK AVENUE
HACKENSACK, NJ 07601

PHONE: 201.488.3900 | INFO@SHAPIRO-CROLAND.COM