

The Sensory Garden is a unique, barrier-free garden where visitors of all abilities can experience nature.

It is designed with wide pathways and raised flower and herb beds that encourage the use of all five senses—touch, taste, smell, sight and sound.

The Sensory Garden is directly adjacent to the Vale Road parking lot, and is also accessible from the Pines Lake Drive West parking lot on a short gravel path.

Friends of Laurelwood Arboretum is a volunteer non-profit conservancy whose mission is to preserve Laurelwood Arboretum as an oasis for the enjoyment of nature and to provide opportunities for environmental awareness through educational programs, community involvement and outreach activities.



## Welcome to the Sensory Garden



Photo by Dawn Healey

Friends of  
**Laurelwood Arboretum**  
*Connecting People with Nature*

725 Pines Lake Drive West  
Wayne, New Jersey 07470  
973-831-5675  
[www.laurelwoodarboretum.org](http://www.laurelwoodarboretum.org)



Follow us:

Please recycle to the Notice Board

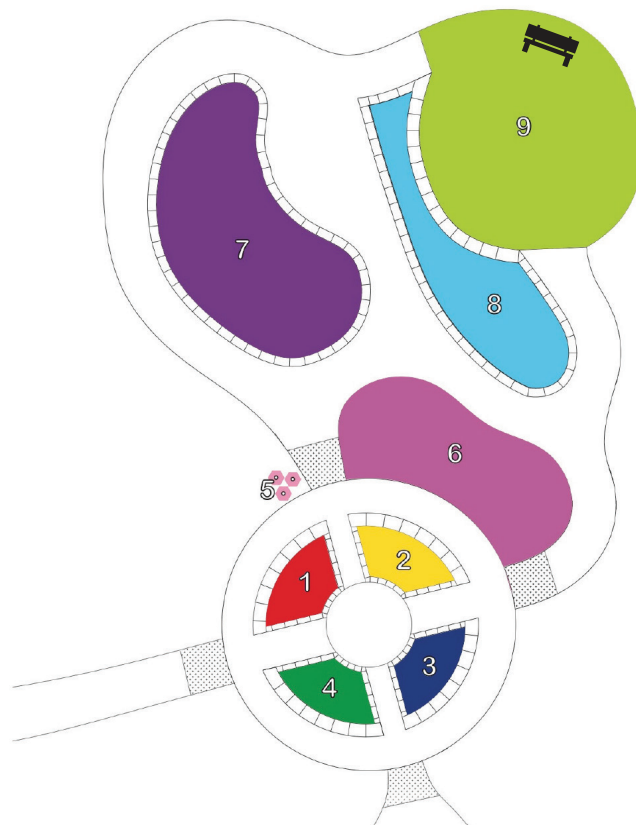
05/20

Friends of Laurelwood Arboretum is a  
501(c)(3) non-profit organization.



The sensory garden is recreated anew each year and maintained by the horticultural staff and volunteers.

**This special place was funded by** Passaic County Open Space Commission, Lions Clubs of Wayne and West Milford, Friends of Laurelwood Arboretum and Wayne Township.



### Designed for the Senses

1. Touch: Soft, spiky and smooth plants such as jade, succulents, hens and chicks, ornamental grass, lamb's ear and sedum.
2. Taste: Wholesome plants and herbs such as basil, sage, thyme, stevia, nasturtium and oregano.
3. Sight: Take in the color explosion of geraniums, abutilon, veronica, four o'clocks and other annuals.
4. Smell: Fragrant flowers and herbs like geraniums, Vick's plant, Asiatic lily and lemon verbena.

5. Sound: Relax and enjoy the sounds of our water feature and listen to the birdsongs and breezes in the surrounding trees.

6. Pollinator Bed: Observe bees, butterflies, caterpillars and other pollinators moving from plant to plant, like butterfly weed, swamp milkweed, blood flowers and dill.

7. Lavender Bed: Enjoy the delicate color and fragrance of English lavenders 'Hidcote,' 'Munstead' and 'Phenomenal.' The bed is edged in thyme.

8. Tropical Bed: Full of vibrant plants overwintered in our greenhouse, including banana, coleus, tropical plumbago and red-flowering hibiscus.

9. Learning Circle: A place for quiet contemplation and educational gatherings.

